



Holiday Menu

Enjoy the holiday season with friends, family or colleagues!

2021

**At KaneffGolf
we are committed
to enhancing your
golf tournament
experience.**

Contact our
Golf Tournament
Event Planners

905.455.8400
sales@kaneffgolf.com

View our
Virtual Tour
of Lionhead at
www.kaneffgolf.com

DEAR HOST,

I am excited to welcome you to KaneffGolf for what promises to be yet another exciting season of great golf and good weather! If you have never experienced a KaneffGolf facility, on behalf of our staff I have the privilege of welcoming you to our family of courses.

We are a golf operator that has grown organically over the past twenty years, starting in 1989 with the development of our world class flagship facility, Lionhead Golf Club & Conference Centre, transforming into an organization spanning six properties across Southern Ontario.

All of us at KaneffGolf have remained committed to ensure that every one of our customers enjoys the best all-round golf, dining and service experience at our courses be it at a tournament, on a leisurely day of golf with friends or family, or at our unrivaled banquet facilities and meeting rooms in idyllic settings.

I encourage you to find out more about us and our facilities on the web at www.kaneffgolf.com where you can check for the latest news and events. If you are not yet a KaneffGolf E-mail Club member, you can sign up to become one within minutes. As a member, you will receive timely notices about upcoming specials. Make certain, too, that during your first round of golf this year, you become a KaneffGolf Rewards Member. You can gain valuable points towards complimentary rounds of golf at any KaneffGolf course.

If you wish to enjoy playing a variety of courses that are designed to accommodate golfers of all skill levels, that also offer unrivalled customer service within one golf family, then look no further than KaneffGolf.

Kaneff Golf Family of Course

Lionhead Golf Club & Conference Centre

8525 Mississauga Road
Brampton, ON L6Y 0C1
(905) 455-8400 Pro Shop
(905) 455-5815 Fax

Lionhead has established a reputation for excellence. Designed and groomed to excite every level of golfer, Lionhead offers its guests one of Ontario's finest golfing experiences on two championship courses. The famous Legends course has a slope of 155, creating a golf experience that you will never forget. Small undulating putting surfaces, tight tree lined fairways, cavernous bunkers and the Credit river that flows through or beside 14 out of 18 holes will leave most golfers speechless at the end of the round. The Masters course has been coined the 'kinder and gentler' layout at Lionhead. Sloped at 146, it is a more traditional design harmonizing with the natural surroundings of forest and rolling hills that will sneak up and completely blindsides you.

Royal Ontario Golf Club

6378 Trafalgar Road
Hornby (Milton), ON L0P 1E0
(877) ROYAL-18 Toll-free
(905) 693-9966 Pro Shop
(905) 693-9832 Fax

Events at Royal Ontario are nothing less than spectacular. The course layout unfolds over an old equestrian centre that has a dramatic hilly terrain, dotted with wetlands in lower lying areas of the Sixteen Mile Creek river basin. Each and every hole features a unique challenge that will test your game. Make sure you are decisive and hit your shots with authority! Golfers will find a relaxing environment in which to reminisce about their round of golf within our Moe Norman lounge, or seated on our massive outdoor patio area, overlooking our finishing holes.

Royal Niagara Golf Club

1 Niagara-on-the-Green Blvd
Niagara-on-the-Lake, ON L0S 1J0
(866) ROYAL-18 Toll-free
(905) 685-9501 Pro Shop
(905) 685-3909 Fax

A contemporary design that uses the spectacular natural terrain of the Niagara Escarpment to create a stunning layout. Nestled between the 120 year old Welland Canal, the beautiful Bruce Trail and the Niagara Escarpment it has become one of the "must play" courses on an international standard. This 27 hole facility has also been host to prestigious tournaments such as the International Junior Team Championship and the Telus Skins Game.

Carlisle Golf Club

523 Carlisle Road, PO BOX 30
Carlisle, ON L0R 1H0
(800) 661-4343 Toll-free
(905) 689-8820 Pro Shop
(905) 689-2249 Fax

Natural, gentle rolling fairways lined with natural whispering pine trees reminds you of South Carolina as your drive onto this property. As you play through the 27 hole layout you will quickly experience a golf course with subtle turns that demands more placement shots rather than power. Carlisle's clubhouse is nicely decorated and perfect for meals before and after golf. Tournaments, meetings and social occasions are perfectly suited for Carlisle.

Century Pines Golf Club

592 Westover Road, RR # 1
Flamborough (Troy), ON L0R 2B0
(866) 388-5688 Toll-free
(905) 628-2877 Pro Shop
(905) 628-3959 Fax

One of Ontario's hidden gems! This is a golf course filled with much interest and character. Architect Ted Baker has created a course that gives a golfer ample opportunity to polish their iron play as accuracy and distance control comes into play everywhere on the golf course. The Clubhouse has a beautiful patio which is the ideal spot to gather after the round. Specializing in tournaments; Century Pines can do it all, and well within your budget.

Buffet Dinner



Carlisle Golf Club

The Menu

Assorted rolls and butter
Caesar with traditional condiments
Mixed greens with two dressings
Assorted delicatessen salads
Imported and local cheese tile
Garden fresh crudité and dips
Genoa salami, kielbasa, prosciutto plate

Roast turkey, sage dressing, pan gravy
Baked pacific cod loin, cranberry and pumpkin seed
crust or pineapple glazed Ham
Roast striploin, herb jus
Daily pasta dish
Roasted potatoes, rosemary, garlic
Mashed potatoes, roasted garlic butter
Seasonal vegetables

Dessert Table

English trifle
Mincemeat tarts
Christmas pudding, brandy crème Anglais
Traditional yule log
Christmas cookies
Fresh fruit presentation

\$64.95 per person

*HST and facility charge not included, Per Person pricing (pp).
All prices are subject to change without notice. Menu is merely a suggestion.
We are happy to customize your event. Full menu available upon request.*



Carlisle Golf Club

The Menu

Four Course Meal

Please select a soup, a salad, an entrée and a dessert from the items listed below.

Soup

Cream of fire roasted plum tomato, sharp english cheddar crostini Puree of autumn squash, chives, crème fraiche, sweet potato strings Cream of cauliflower, roasted cauliflower, chive oil, frizzled onions

Salad

Caesar, parmesan, bacon, herbed croutons
Beet, walnuts, arugula, feta, orange and ginger vinaigrette

Entrée

- Roasted turkey, sage dressing, mashed potatoes and green beans
\$59.95 pp
- Supreme of chicken stuffed with cranberries and brie, grilled shrimp, fingerling potatoes, green beans
\$64.95 pp
- Beef tenderloin stuffed with roasted red pepper, goat cheese and spinach, fingerling potatoes, root vegetables
\$67.75 pp

Dessert

Molten lava cake, berry compote, French vanilla ice cream
Pecan cranberry tart, candied ginger whip cream, white chocolate drizzle
Eggnog cheesecake, berry compote, white chocolate drizzle



Our packages

Package 1

Cocktail Reception

Crudit  and dips ~ garden fresh vegetables served with three dips Assorted cheeseboard ~ selection of imported and domestic cheese, garnished with grapes and crackers.

A selection of hot Hors d'Oeuvres (chef's choice)

Late Night

Coffee and tea station

\$12.00 pp

Package 2

Cocktail Reception

Crudit  and dips ~ garden fresh vegetables served with three dips Assorted cheeseboard ~ selection of imported and domestic cheese, garnished with grapes and crackers

Antipasto bar

Late Night

Fresh fruit presentation

Christmas cookies, cupcakes and tarts Coffee and tea station

\$20.00 pp

Package 3

Cocktail Reception

Crudit  and dips ~ garden fresh vegetables served with three dips Assorted cheeseboard ~ selection of imported and domestic cheese, garnished with grapes and crackers

Antipasto bar

Tomato and cucumber bruschetta, crostini Chickpea hummus, grilled pita

Late Night

Poutine Station

Fresh fruit presentation

Croqu'em bouche and French pastries Coffee and tea station

\$22.00 pp

Three Hour Bar and Wine with Dinner

Three hours of host premium bar* split between reception and after dinner
Two (2) bottles of house wine with dinner per table
\$41 pp

Four Hour Bar and Wine with Dinner

Four hours of host premium bar* split between reception and after dinner
Two (2) bottles of house wine with dinner per table
\$49 pp

Five Hour Bar and Wine with Dinner

Five hours of host premium bar* split between reception and after dinner
Two (2) bottles of house imported wine with dinner per table
\$55 pp

Additional Services / Upgrades

- Easel: \$20.00
- Flipchart and markers: \$25.00
- Wireless microphone: \$250.00
- PowerPoint advancer: \$50.00
- Screen: \$261.00
- Screen and Projector: \$500.00
- Audio/Visual Technician on-site (4hr): \$327.00 •
- Audio/Visual Technician on-site (8hr): \$653.00

Price List for Bar Service

Domestic bottles of beer \$8
Domestic pints \$9
Imported bottles of beer \$9
Imported pints \$9
House wine by the glass \$9
Liquor mixed drinks
Premium liquor \$ prices vary by selection
Top shelf liquor \$ prices vary by selection
Soft drinks and juice \$4

Decor Package 1

Swirl floor length linen and chair covers (Choice of white or ivory)
\$11 pp

Decor Package 2

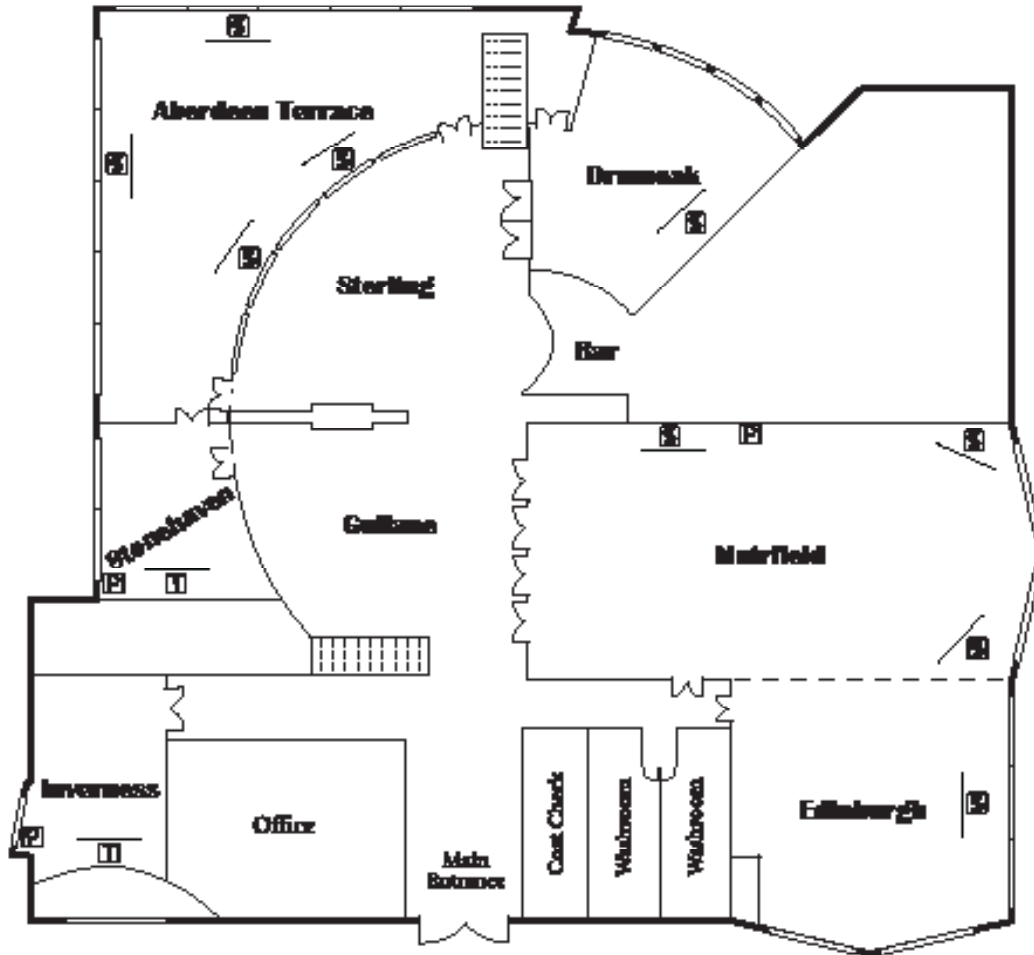
Swirl floor length linen, napkin and Chiavari chairs
\$17 pp

*All prices are exclusive of applicable taxes, gratuities and room rentals.
All prices are subject to change without notice. Menu is merely a suggestion.
We are happy to customize your event. Full menu available upon request.*

LIONHEAD GOLF CLUB & CONFERENCE CENTRE

UPPER LEVEL

☒ = PHONE | ☑ = SCREEN | ☒ = TV/MONITOR



	Room Size l x w (ft)	Sq. Ft.	Ceiling (ft)	Board- room	U-Shape	Hollow Square	Round n/a	Theatre Style
Edinburgh	45 x 46	2,070	12	28	32	48	96	144
Muirfield	84 x 42	3,528	13	n/a	n/a	n/a	192	300
Combined	L-shape	5,598	—	n/a	n/a	n/a	320	444
Inverness	21 x 25	525	15	14	n/a	n/a	n/a	n/a
Stonehaven	23 x 23	529	25	16	20	16	32	54
Aberdeen Terrace	60 x 70 x 50	2,100	25	n/a	n/a	n/a	136	200
Gullane	33 x 25	825	30	n/a	n/a	n/a	140	120
Sterling	47 x 34	1,598	30	n/a	n/a	n/a	48	160
Drumoak	40 x 28	1,120	25	n/a	22	n/a	48	100
Glasgow (Inverness)	14 x 14	196	10	10	n/a	n/a	n/a	n/a

All prices are exclusive of applicable taxes, gratuities and room rentals. Per Person pricing (pp).
 All prices are subject to change without notice. Menu is merely a suggestion.
 We are happy to customize your event. Full menu available upon request.